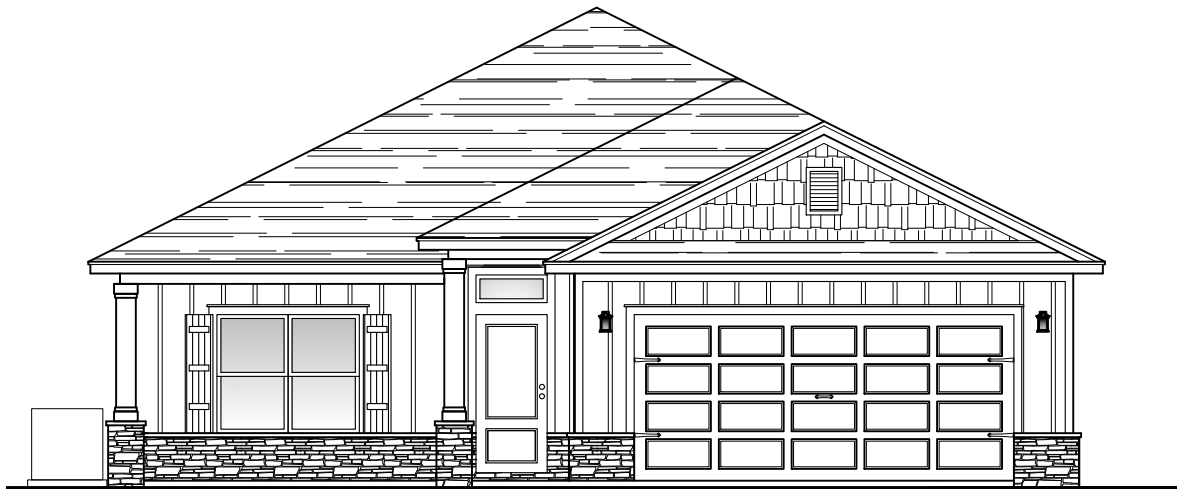
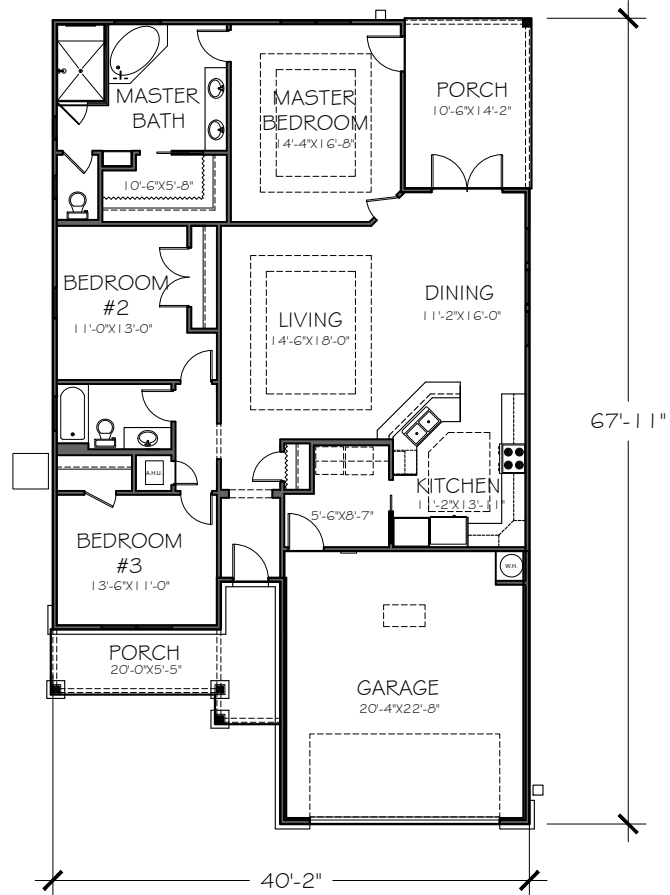


AMERICAN HOUSE PLANS LLC

7552 NAVARRE PARKWAY * SUITE #7 * NAVARRE, FL 32566 * (850) 939-7526

"THE LUNETA"

1754 SQUARE FEET OF LIVING
AREA
2542 OVERALL FOOTPRINT
3 BEDROOMS
2 BATHROOMS
OPEN FLOOR PLAN
COVERED PORCHES

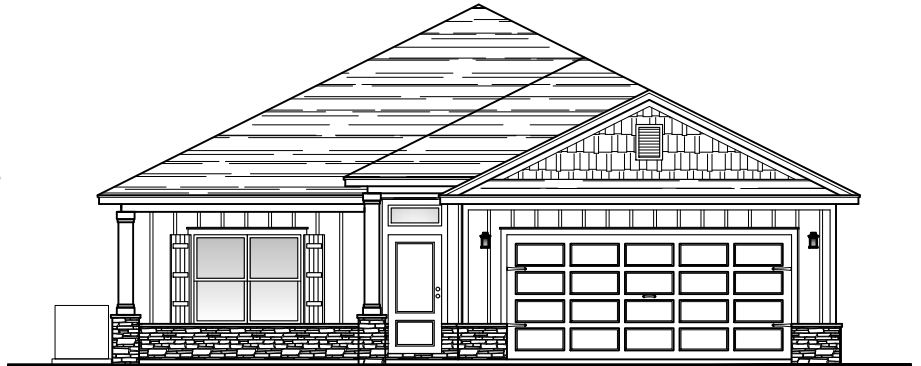


AMERICAN HOUSE PLANS LLC

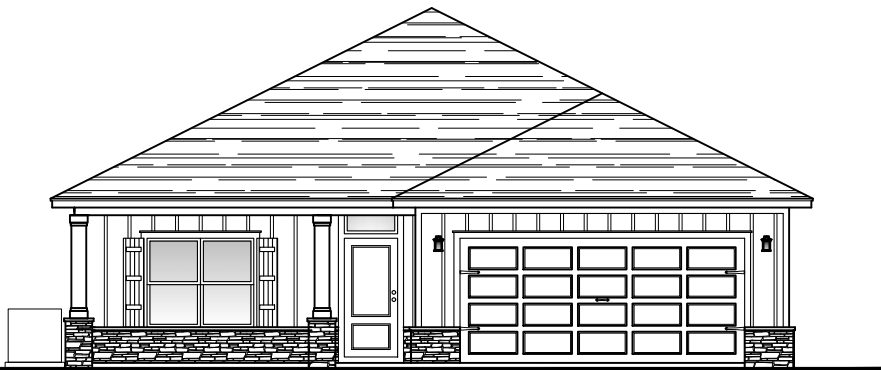
7552 NAVARRE PARKWAY * SUITE #7 * NAVARRE, FL 32566 * (850) 939-7526

"THE LUNETA"

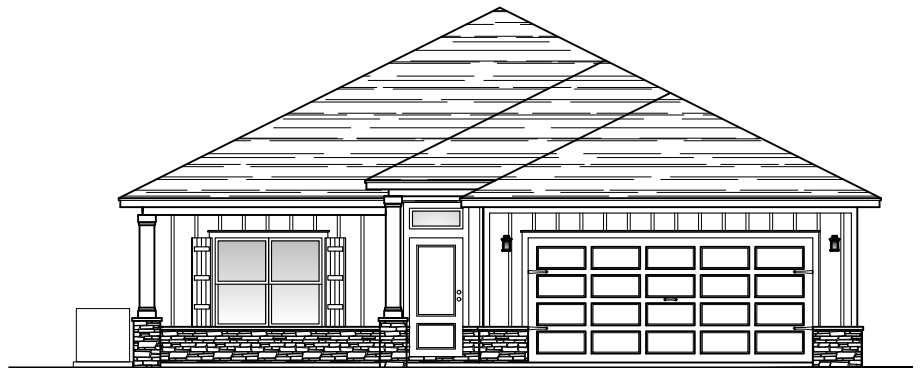
1754 SQUARE FEET OF LIVING
AREA
2542 OVERALL FOOTPRINT
3 BEDROOMS
2 BATHROOMS
OPEN FLOOR PLAN
COVERED PORCHES



ELEVATION "A"



ELEVATION "B"



ELEVATION "C"